

**Poole Park Forum**  
**Thursday 19<sup>th</sup> January, 3pm – 5pm.**



**Agenda:**

- Round the table – what’s happening with you?
- Updates from last meeting:
  - East gate lodge and pavilion update
  - Miniature Railway
- Update on the Poole Park Life project:
  - What’s in the bid?
  - Programme, summary of capital works
  - Tree strategy and surveys
  - Activity planning, volunteering sessions etc
  - February deadline for submitting the bid
- AOB

## Updates from last meeting:

**Pavilion** - Heads of terms are yet to be agreed with the Cricket Club, they have submitted a draft business case and this suggests they will want to continue hosting community events in the pavilion in the future. Schedule of rates and further detail to be agreed but it is in the interests of the club to make these reasonable and encourage use of the building.



**East gate lodge** – there has been no change since the last meeting: 3 clubs are using the Lodge for low rates that are consistent with the pavilion. In the Spring more time will be available to look at the future use of the building.



**Miniature Railway** - The Council will be re-tendering the operation of the Miniature Railway.

Market sounding last Autumn suggests that the required investment to upgrade the facilities for a c. 25yr lease is available from the private sector.



Discussed the facilities: Cricket club had hoped to attend but had to send apologies. Update as above.

Railway – Chris Bullen outlined his position and there was some discussion on the BoP process and why the trains had to be removed. MW outlined BoP tender process and the benefits this could bring, with known interest shown in the autumn market sounding.

## Poole Park Life HLF bid

- 28<sup>TH</sup> Feb Submission
- Planning Application to follow
- June HLF Board of trustees for assessment
- If successful - July publicity and permission to start in August
- 4-year project through to Aug. 2021:
  - Appoint a new post for a Contract manager
  - Writing of contract documents, supplier engagement, further design if required, tendering of all works.
  - Activity plan continues through 4-year project and embedded as a part of the park legacy.
  - Programme will minimise any construction work in July and August.
  - Further consultation as required on specific items, e.g. play area final designs, fitness equipment, evolution of garden designs etc

# Poole Park Life HLF bid

## ➤ Programme

Go-Kart track site to complete 2017 – Tesco funding

All other work to start 2018 onwards, split in to themes:

Lakes, Lagoon & drainage: Winter 2018/19

Using the end of Park Lake Road and adjacent grass area for works operations.

Dredging, new islands and habitats created, improvements to existing features.

Play theme: New play areas, fitness equipment and play landscapes constructed, following tender process, for Spring 2019.



# Poole Park Life HLF bid

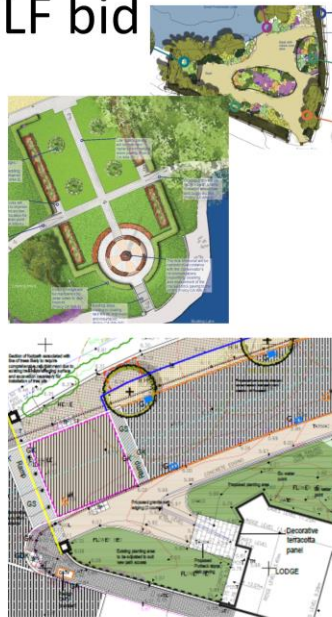
## ➤ Programme

Heritage & Landscape theme:

Sensory gardens improvements sequenced to provide discrete projects for volunteers to work on, 2018 – 2020.

Other projects, e.g. improvements to the freshwater lakes and war memorials undertaken as a single contract. 2019-2020

Traffic theme. Improvements to the 3 road entrances, feature areas (water fountain, war memorial, middle gates), pathways, road surface etc. Sequenced works from Sept 2019, approx 20 weeks.



# Poole Park Life HLF bid

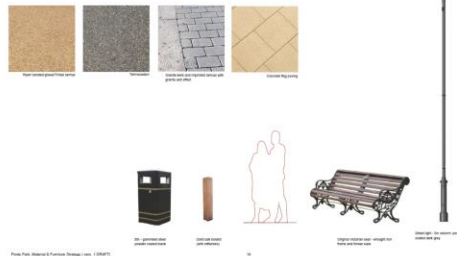
## ➤ Programme

Geese and Wildlife theme, various improvements such as new areas of planting, work to the islands that are embedded in other contracts above.



## Street furniture and infrastructure

New light columns, bins, benches, site information boards etc will be installed as part of the landscape and traffic theme works. 2019/20



Discussion on the different themes, programmes of work and what happens if we overspend on one item

MW – all items have contingencies against them, some carry greater risk than others, eg improvements to roads, car parks have been assessed by a Quantity surveyor, lakes and lagoon work carries greater risks of unknown issues that could delay works or increase costs.

Capital works identified in Rd 1 have in the main been brought forward in more detail in the development phase.

## Poole Park Life HLF bid

- What is not obvious – selected highlights



Clockwise from top left: Fountain to be refurbished and brought back to full working order; Sluice channel brick piers and temporary deck will be the first priority if we are successful; EGL gable end features terracotta panels that will be opened up and information added; Phone kiosks are planned to be removed – much interest around the group as to how they could be used, eg play areas, The Ark or private use! Event infrastructure to be improved; Lighting columns discussed: all lights to be improved to the style shown in slide 7 and including the globe lights on pillars; removal of bollards and clutter and landscaping of areas with poor surfacing.



# Poole Park Life HLF bid

Tree Surveys and Strategies – 2 different purposes.  
Tree surveys are still being undertaken, over 230 individual surveys.

1. Tree Strategy for the HLF project and to define future park management.

Compartment by compartment guide to inform planting, removals and management practices.



# Poole Park Life HLF bid

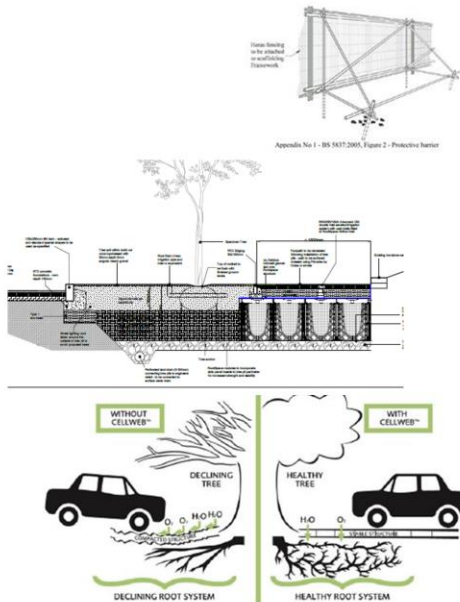
Tree Surveys and Strategies – 2 different purposes.

2. Arboricultural method statement and mitigation of development works for Planning application.

How we will protect the park's trees during development – fencing, no dig construction etc

Types of surfacing and landscaping being undertaken and their impact on the trees, eg porous surfacing, use of CellWeb to protect roots.

Explaining which trees are to be removed, why and how will they be replaced.



# Poole Park Life HLF bid

## Activity Plan - Aims

- Use Heritage to educate, inspire & create ownership for visitors & local residents
- Activities that provide long-term benefits
- Activities that help to compensate for works taking place
- New Activities – Art, Horticultural therapy
- Training – For park staff & volunteers (and Concessions?)
- Activities that reach target groups
- Work alongside and offer support to key stakeholders



# Poole Park Life HLF bid

## Activity Plan – Action Plan

### Heritage

- Archive through poolepark.org
- Heritage Interpretation through Art
- Work with local schools teach heritage value
- Training park staff on heritage
- Information Kiosk - Heritage display, photos, heritage map & more
- Use of volunteers in Heritage Talks & focussed research



### Landscape

- Gardening volunteers
- Quiet / Sensory gardens
- Horticultural therapy – inc. Link with Chestnut Nursery
- Horticultural training for staff & volunteers

### Lakes & Wildlife

- Volunteers supporting wildlife habitat creation
- Only Rain Down the Drain
- Wildlife spotting tours, Feeding station & Webcams



# Poole Park Life HLF bid

## Activity Plan – Action Plan

### Traffic / Access

Further Access Audits

Clear information giving on operations & timescales



### Play

Temporary play structures, Building natural play areas, Circus skills

Victorian / Heritage themed events - garden games, croquet, food, music, lawn tennis & more!

### Community & Other

Signage & interpretation – Consultation and design

Training volunteers - First Aid, Horticulture, customer service, retail  
Fundraising

Working with Poole Housing Partnership

East Gate Lodge / Cricket Pavilion / Kiosk

Family Fundays



# Poole Park Life HLF bid

## Nature Engagement Event

**Monday 30<sup>th</sup> January 2017**

**Between 2pm and 6pm**

Lake Litter Pick  
(the lake will be drained on the day)  
Wildlife Craft Activity with DWT  
Poole Park Birdlife & Bat life!  
Litter Free Coast and Seas

At car park near The Kitchen  
Please wear old clothing and your  
wellies!



# Poole Park Life HLF bid

Any Questions?

Thank you for your help and input throughout the project...

...and can you help?

Letters of support from stakeholders, partners and local organisations help to show the HLF the support for the project and how well loved Poole Park is.

If you are able to write a letter or e-mail it would be appreciated.

AOB

Next meeting to be arranged for April 2017.

# Poole Park Life HLF bid

In attendance

Apologies received.

Mike Heckford/Michael Collins/Pat Lincoln/Graham Sutton: FoPP	Eunice Marsden/Val Ingram/BabsPlumbridge	PP Heritage group	
Naomi Preston/Laurie Croad	Poole Park User Group	Chris Bullen	Miniature Railway
Rachael Pountney	South Coast Caterers		
AJ Windsor/Pip Woods	Rockley Watersports	Alan Cooper	Wessex orienteering club
Roy Cane/Pete Wiles	Poole Model Yacht club	Ros Spencer	Poole Wheelers
Brett Townsend	Tennis	Mike Towner	Poole Runners
Phil Baker	Poole Park Bowls club	Gemma Genco	B&PCFE
Angela Mansbridge	Chestnut Nursery		
Nick Williams/Jo Pilley	Poole Town cricket club	Gail Percival	PHP
Ruth Crook	Club 21	Sandra Wilson	PHP
Richard Jeffrey	Zoofish Arts	Hazel Clifton	BiPolar UK
Mike Randall	Parkstone Bay Assoc.	Gemma Wilton/Chris Dear	BoP Rec & Devt
Tony Unsworth	Mini Golf		
Barry Thomas	W. Hampshire modellers	Mike Cure/Diane Storey	Park Run
Cllr J Rampton	Portfolio Holder	Felicity rice/Kate Salter	Transition Poole
Parkstone Ward: Cllrs Stribley, Williams, Challinor		Poole Town: Cllrs Garner-Watts, Hadley, Howell	