

Located between the Freshwater Lakes, the proposal for the go-kart track area is to create a peaceful haven for both people and wildlife.

A hedge will be planted along the existing fence line to create sense of enclosure and shelter whilst still allowing views out to the surrounding parkland. A circular path within the garden encourages gentle exercise and connects places of interest along the way. This includes benches from which to observe wildlife in the surrounding tree canopy and on the lake. A bankside area will be cleared on the smaller Freshwater Lake and works carried out to allow safe access for the disabled and space for pond dipping.

Planting of native plants and their hybrids and the use of natural materials, such as wood, stone and self-binding gravel will respect the informal waterside character of this part of Poole Park. Grasses, ferns and colorful herbaceous plants provide sensory qualities, seasonal interest and wildlife habitat. Planters in the center of the garden allow these to be viewed and maintained at a more comfortable height and provide additional opportunities to sit.

- Additional proposals subject to further funding:
- 'Easy access' gate;
 - Raised planters;
 - Improved path surfacing;
 - Bird and bat boxes; and
 - Pond dipping platform.

Willow and hazel planting to create shelter and enhance waterside setting.

Native plants chosen for colour, smell and texture, seasonal interest and wildlife value.

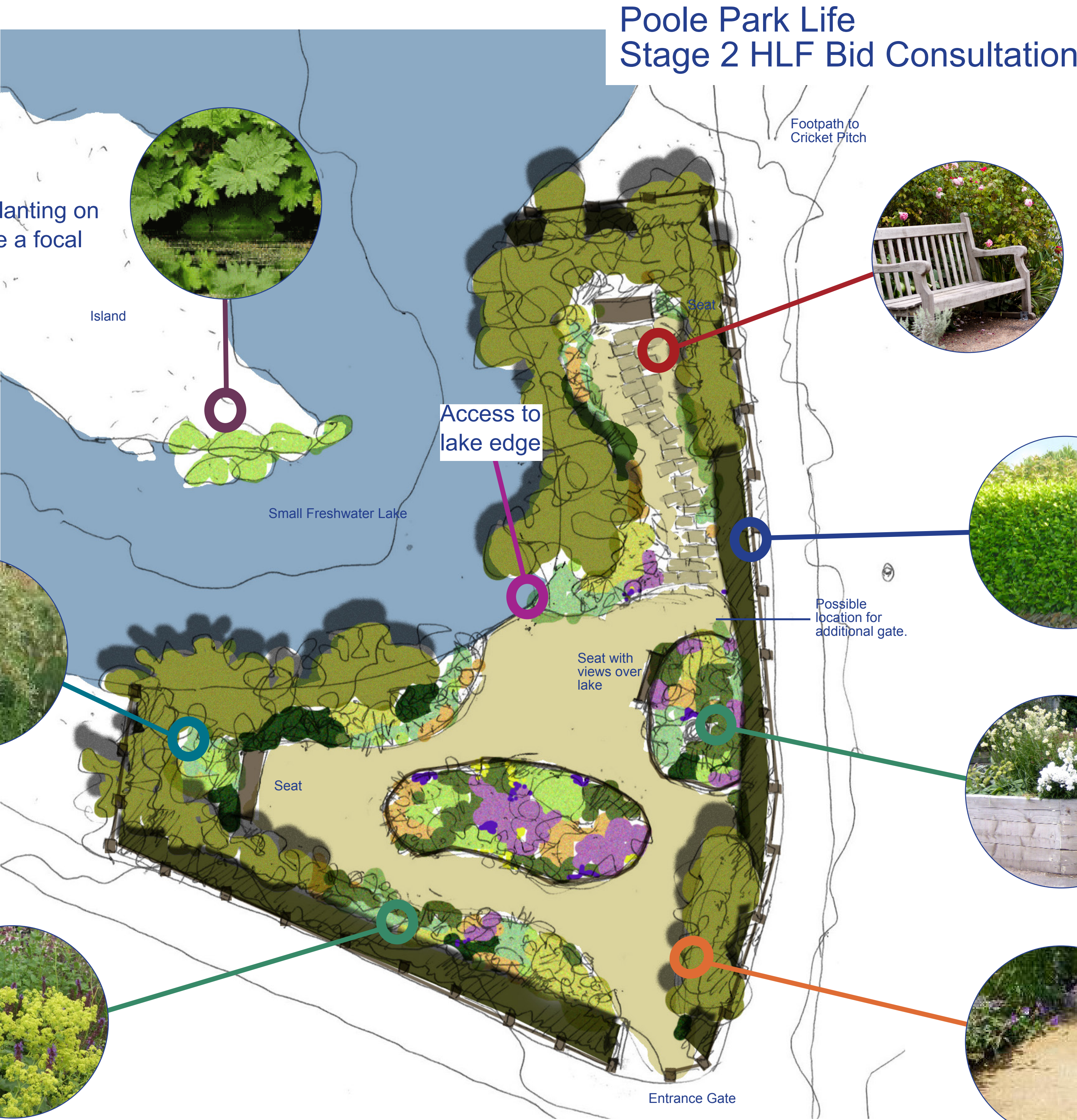
New water edge planting on the island to create a focal point.

Path made of recycled paving materials leads to sheltered seating.

A low hedge along the fence line will provide protection from wind but still allow views out.

Raised planters with sensory planting.

Paths surfaced to allow wheelchair access.



Poole Park Life Stage 2 HLF Bid Consultation



Sensory Garden Project The Go-Kart Track Site - a 'Haven for People and Wildlife'